

Semi-automatic Dispensing Shelf

Multicase-unit

The target medicine case opens automatically, and the device helps you pick out the medicines easily by guiding you to the location of medicines by voice and LED lights



*The specification and configuration may change without a notice due to modification.
*The color appeared in the catalog might be different in the actual product.
*The contents of the catalog are current as of February 2024.



Automatically guides to the case of prescribed medicine. Saves time and effort of searching for medicines.

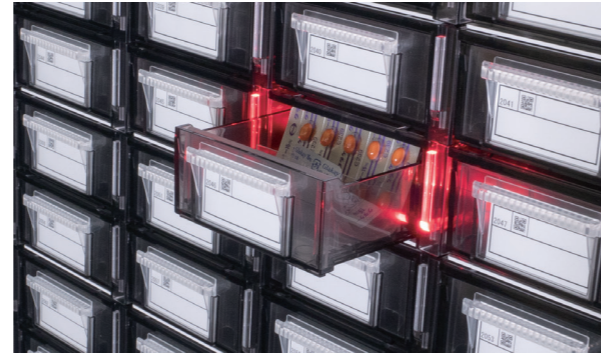
Regardless of the experience level of the worker, medicines can be stocked safely and at the same speed.



Point 01

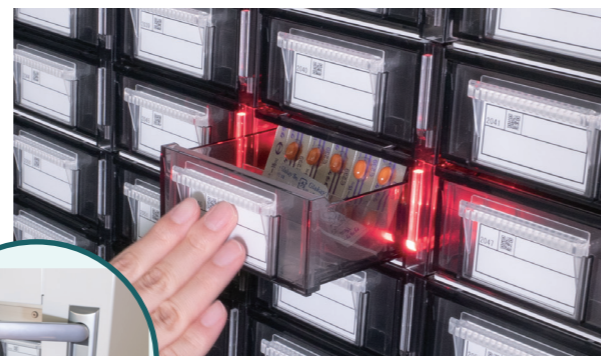
Guide you to the desired medicine case

When you select a prescription and press Start, the corresponding medicine case will automatically open, and you will be guided with voice notifications and LED lights.



Automatic locking structure

Just close the case to lock it automatically. Then the case with the next medicine to be picked will open.



The cases can also be unlocked by hand during unexpected circumstances such as a power failure.

Point 02

Accommodates medicines of various shapes

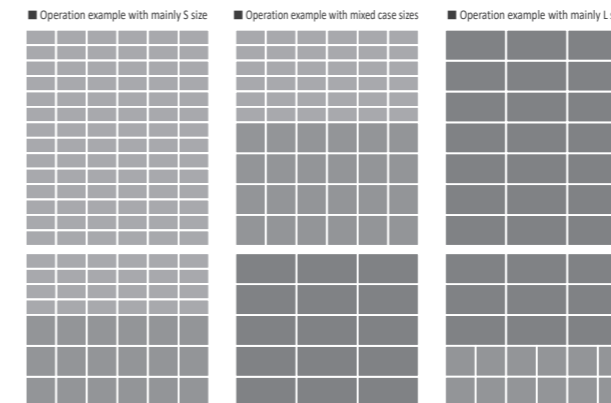
There are no shape restrictions for medicines to be stored in the case, and the case can accommodate various types of medicines such as Blister sheet, eye drops, ointments, and heat pack powder medicine.



Point 03

Freedom to combine case sizes

You can freely select the size of the case to be installed on the unit from S size, M size, and L size for each shelf. You can store medicine according to your medication dispensing tendency, helping to improve work efficiency.



*You can only specify the case layout when placing the order.

Options

Shutter with lock

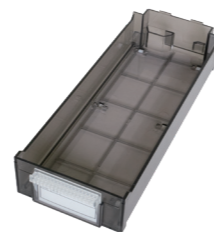


Strict access control with double locking of cases and shutter

You can install a lockable shutter as an optional safety measure.

Medicine case in 3 sizes

S size (Small)



Installable number of cases: Max. 144 cases (S size (Small) cases only)

Internal dimensions: W100 mm × D270 mm × H45 mm

M size (Medium)

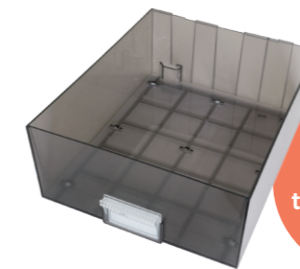


2x the height of the small size case

Installable number of cases: Max. 72 cases (M size (Medium) cases only)

Internal dimensions: W100 mm × D270 mm × H100 mm

L size (Large)

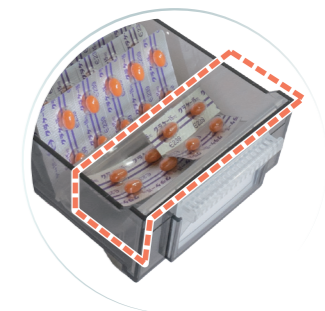


4x the size of the small size case

Installable number of cases: Max. 36 cases (L size (Large) cases only)

Internal dimensions: W225 mm × D270 mm × H100 mm

Tray to store fraction tablets



All cases include a handy tray to store fraction tablets that are difficult to organize. These trays can be added and removed as required.

How to Dispense Medicines

The data on the history of each medicine, such as "when," "by whom," "for whom," "what medicine," and "how much" is managed and controlled.

1 Log in



The dispenser logs in.

2 Select the prescriptions and start picking



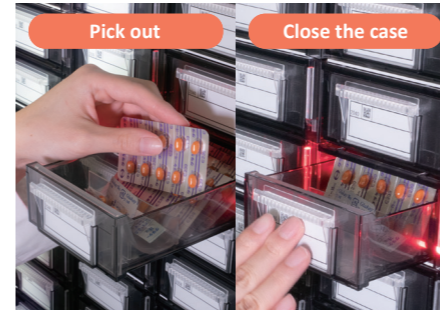
Read the received prescription data from the operation screen or the receipt issued upon receiving the prescription.

3 Automatic guidance to the target case



The target case will be unlocked and opened, and the number to be picked will be displayed on the operation screen.

4 Pick the medicines



After picking the medicine, close the case to lock it. The next case will then open automatically.

*If you require a medicine that you have not placed in one of the cases, you will have to prepare that medicine separately.

How to Fill Medicines

You can fill in medicines with their packaging. Prevent filling errors by verifying the medicine and the case.

1 Log in



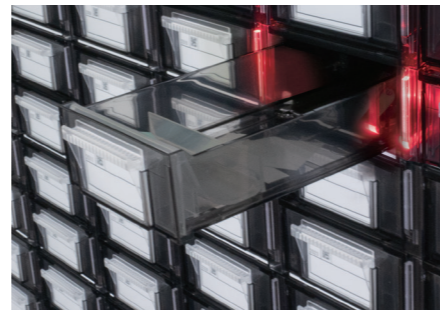
The dispenser logs in.

2 Scan the medicine barcode



Scan the barcode of the medicine to be filled.

3 Automatic guidance to the target case



The target case will be unlocked and opened, and the number to be picked will be displayed on the operation screen.

4 Fill in the medicine

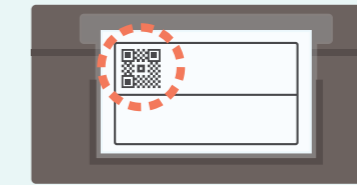


Enter the number of medicines filled and close the case to complete filling.

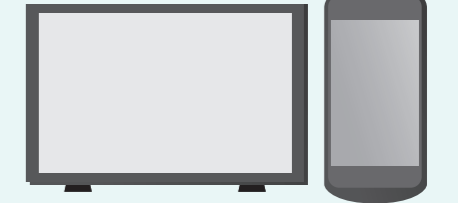
When opening specific cases to retrieve medicines not included in the prescription data

A specific medicine case can be opened either by (1) Reading the QR code on the case or (2) Selecting the medicine from the operation screen. As you can also enter the picked quantity of medicine, you can manage the remaining quantity of medicine in real time.

(1) QR code on the case



(2) Select medicines from the operation screen



Issuing Warehousing records and History Management

Data can also be exported and printed, eliminating errors and omissions of handwritten entries, ensuring accurate medicine management.

20xx/12/01 15:00:00 Page: 1/1

Accounting book

TOSHO AB tab (9102)

Date & Time	Action	Patient No.	Patient name	Dept./LOT	Ward/ Expiry	Rx type	Responsible person	Counting	Quantity	Returning reason
20xx/12/01 15:00:00								(9102)	100	
20xx/12/01 15:00:00								Before total	100	
20xx/12/01 15:00:00	Dispensing	00000001	Taro Toshio	Surgical dept.01		Stats	Test pharmacist	7	93	
20xx/12/01 15:00:00	Refilling						Test pharmacist	100	193	
20xx/12/01 15:00:00	Dispensing	00000002	Hamako Toshio	Radiology		Stats	Test pharmacist	7	186	
20xx/12/01 15:00:00	Dispensing	00000003	Jiro Toshio	Internal Medicine 02		Scheduled	Test pharmacist	7	179	
20xx/12/01 15:00:00	Dispensing	00000001	Taro Toshio	Surgical dept.01		Scheduled	Test pharmacist	7	172	
20xx/12/01 15:00:00	Dispensing	00000004	Saburo Toshio	Surgical dept.01		Stats	Test pharmacist	7	165	
20xx/12/01 15:00:00								(9102)	86	
20xx/12/01 15:00:00								After total	86	

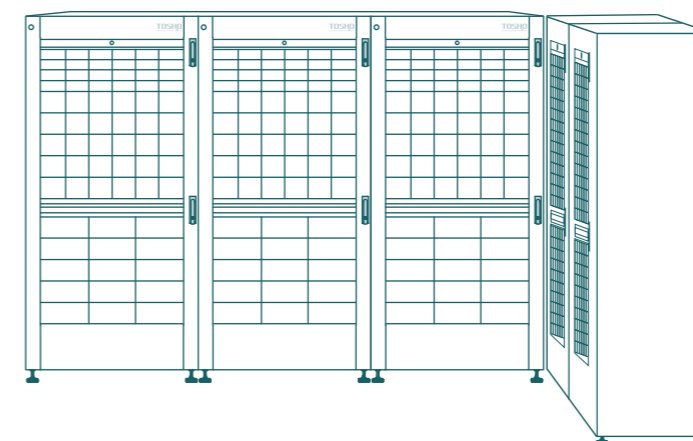
You can add as many units as needed according to the number of medicines to be dispensed.

When adding multiple units, adjust the order of medicines to be picked according to the order of the units.

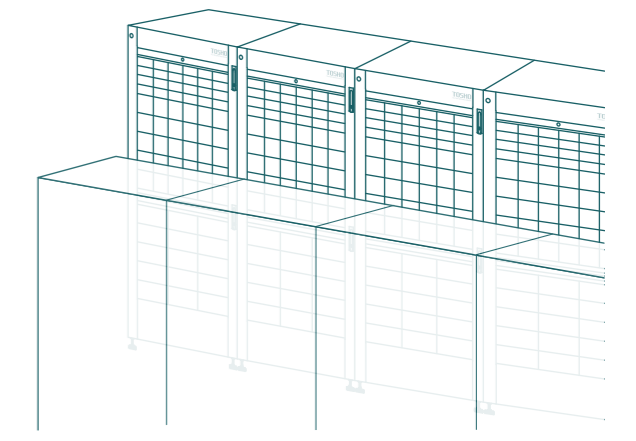


The units can be freely installed according to the environment of the dispensing room.

[Example: L-shaped arrangement]



[Example: Face-to-face arrangement]



Quick, safe, and reliable regardless of the experience level of the worker.

The cases on the multi-case unit unlock and open automatically, not only saving you time but also freeing you from the hassle of searching for specific cases. This ensures the safe and reliable picking of medicines while also greatly reducing the workload placed on the workers, regardless of their experience level.

■ Picking by Sight

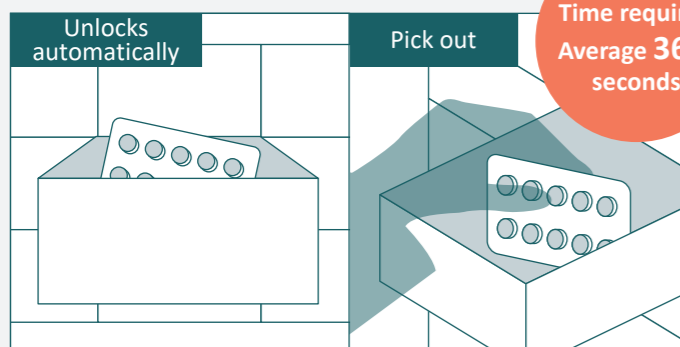


Time required
About **120 to 156** seconds

Takes even longer if the worker is not used to the system

There is a risk of picking errors and other incidents due to differences in regulations, etc.

■ Using the Multi-case Unit



Time required
Average **36.4** seconds

Average time required per prescription	
Single medicine prescription:	10.5 seconds
Two-medicine prescription:	22.1 seconds
Three-medicine prescription:	36.4 seconds
10-medicine prescription:	117.0 seconds

■ Measurement Details

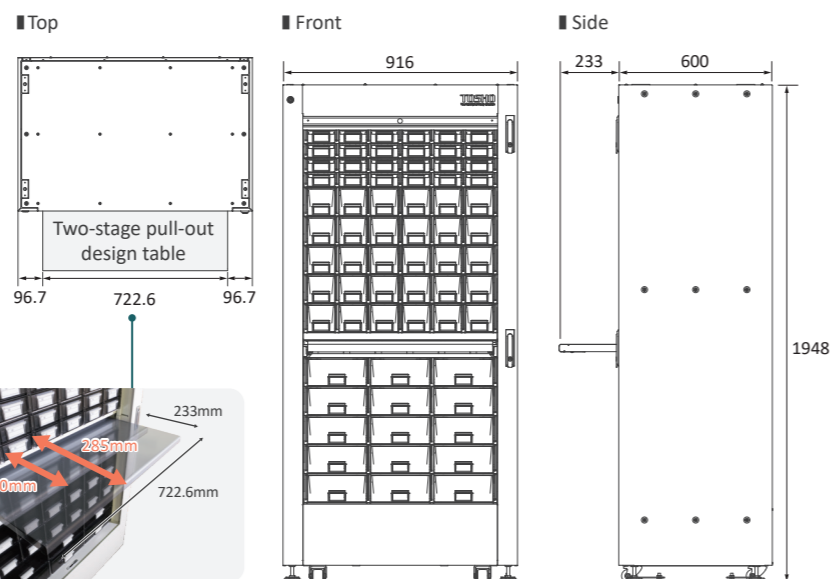
- All test prescription data [3 rounds × 14 days = 42 tablets]
- Measure the time by changing patterns within the range of single medicine prescriptions to 10-medicine prescriptions
- Measure the actual time required to start machine operation, gather the medicine, and finish putting rubber bands on all the medicines
- When using two multi-case units

■ Design

Name	Multicase-unit
Body size*1	W916 mm × D600 mm × H1948 mm When the table is pulled out: Max. D833 mm
Number of case units equipped	36 to 144 units
Body weight*2	350 kg
Power supply	100 VAC to 240 VAC (Multi-power supply)
Maximum power consumption	300 VA
Options	Shutter with lock

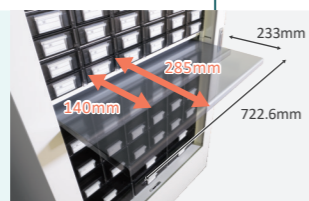
*1 The body size does not take into account screws and other protrusions.
*2 Does not include medicine weight.

■ Body Size Unit [mm]



Two-stage pull-out design table

The work table can be pulled out in two stages to suit the dispensing space and type of work.



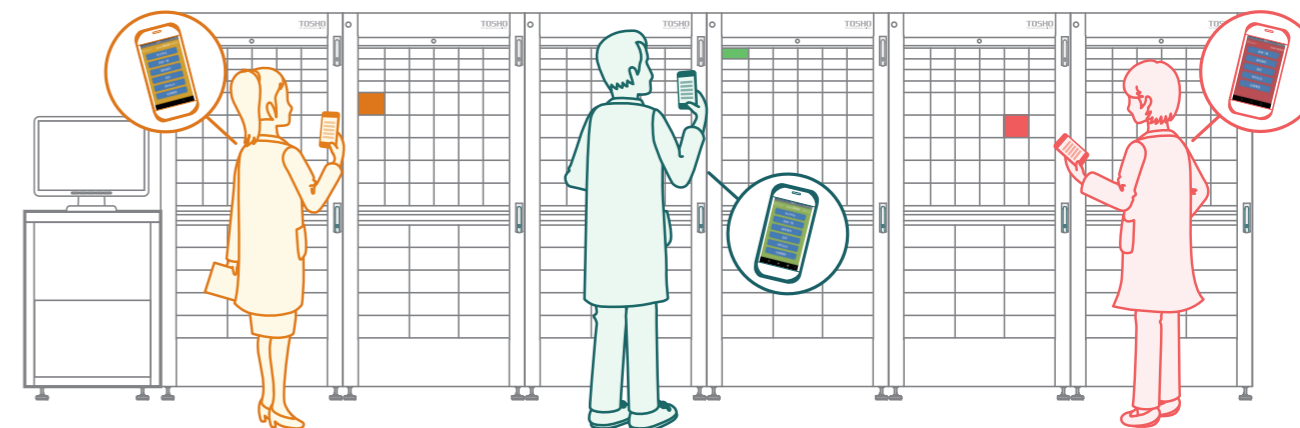
Other optional functions

PDA terminal type control system

Mira

To dispense medicines smoothly, the operations of "Picking medicine confirmation," "Call-up operation," and "Refilling operation" can be performed on the PDA terminal rather than on a PC.

Three people can also collect and fill medicines at the same time, which helps to reduce work time.



Flow of counting and medication dispensing operations

PDA terminals support counting and dispensing work.

1 Log in



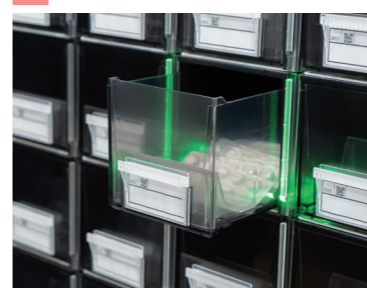
The dispenser logs in.

2 Select the prescriptions and start picking



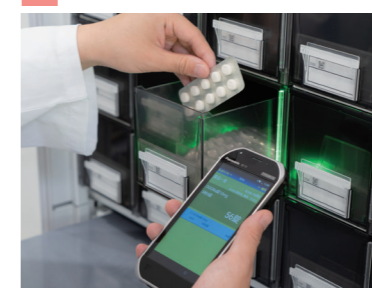
Read the received prescription data from the operation screen or the receipt issued upon receiving the prescription.

3 Automatic guidance to the target case



The target case will be unlocked and opened, and the number to be picked will be displayed on the operation screen.

4 Pick the medicines



After picking the medicine, close the case to lock it. The next case will then open automatically.

The system can support various situations, including simultaneous filling and medicine collection

The LED lights on the worker's terminal and corresponding medicine cases are color-coded.



Worker who logged in first → Green
Worker who logged in second → Red
Worker who logged in third → Yellow